



## Bluepoint Luxury Condominiums





# ESCAPE ORDINARY

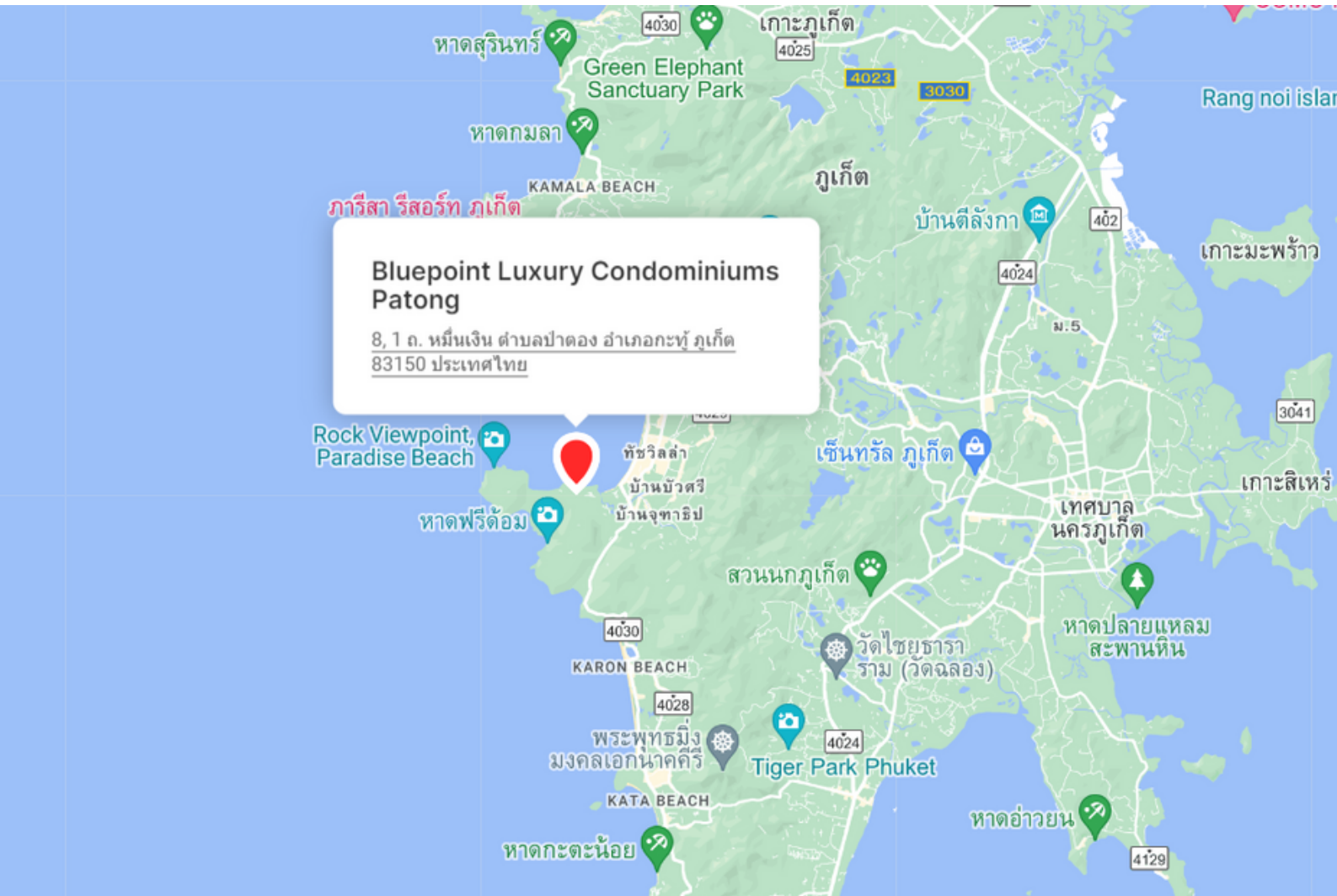


## Bluepoint Luxury Condominiums in Phuket

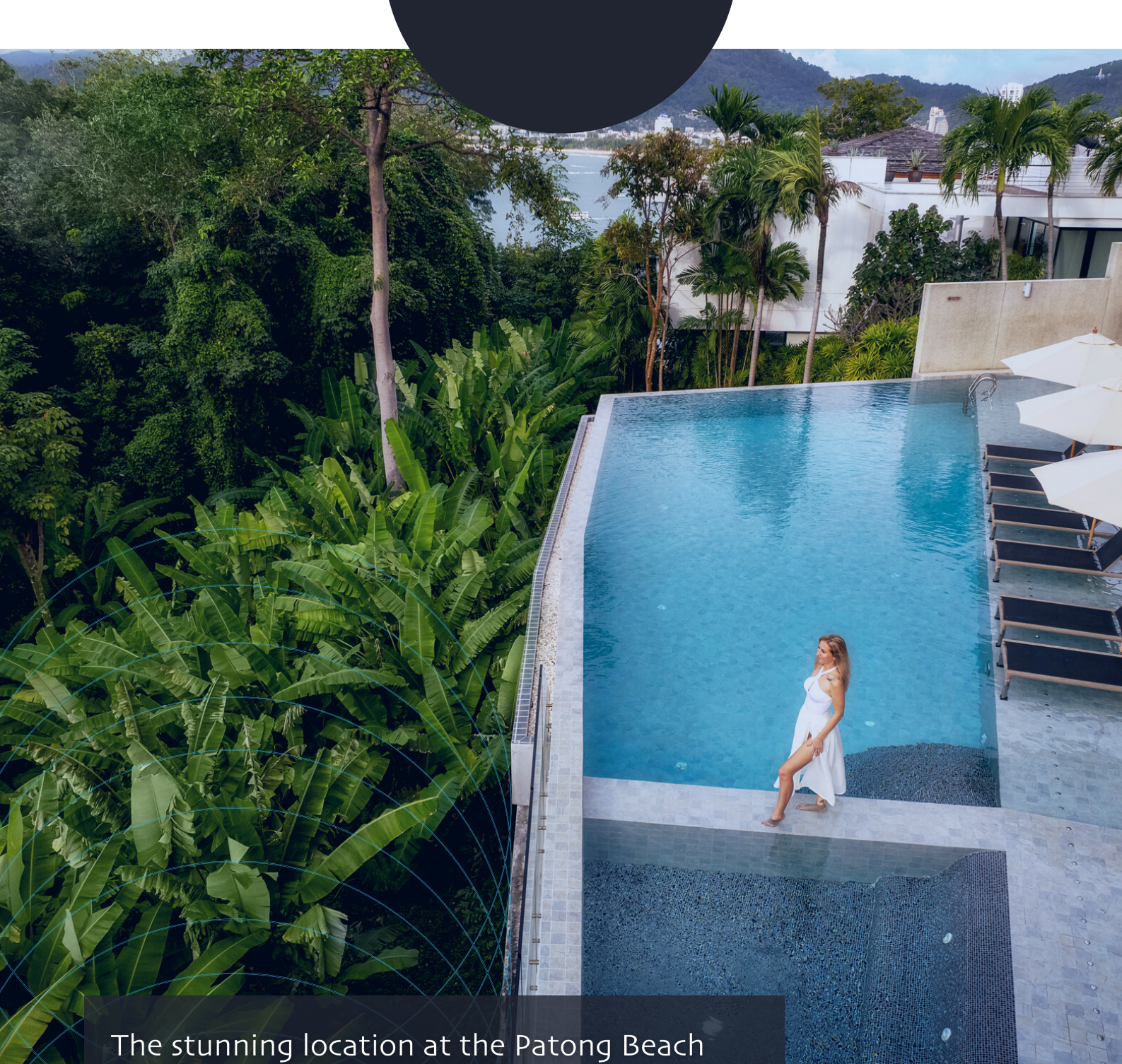
Offers a touch of serenity overlooking the vibrant Patong Bay and the beautiful Andaman Sea.

Nestled amidst the Patong Bay hills, the condominiums afford a rare sea view of the sought-after west-coast of Phuket, while also being in close proximity to all amenities and lifestyle choices you could only dream of.

Walk through a world of safety



Bluepoint Condominiums is located on the west-coast of Phuket and it is located in an enclave that is both private and exotic that will meet all your needs, whether you would like a nice walk on the beach, visit beautiful local restaurants or go for a nice relaxing swim in the amazing turquoise blue water, which are all available to you as soon as you step outside your front door.



The stunning location at the Patong Beach Cape means that you're literally just a few minutes walk away from some of the world's most beautiful beaches, including the 'secret' Paradise Beach, Freedom Beach, and Merlin Beach.

# AMENITIES

## FOR YOUR WELLBEING

- 24-hour Security
- Swimming Pool
- Sun Loungers
- Jacuzzi
- Sun Deck
- In-Unit Washer/Dryer
- Valet Services including Housekeeping



# PENTHOUSE

3 BEDROOMS, 2 FULL BATHS,  
1 HALF BATH



Immerse yourself in the lush  
natural beauty of Bluepoint  
Luxury Condominiums.



The perfect vantage point for buyers looking to make the most out of Phuket's sophisticated resort lifestyle.



DUPLEX  
2 BEDROOMS, 2 FULL BATHS,  
1 HALF BATH



It is the ideal choice for those seeking to experience Phuket's luxurious resort lifestyle.





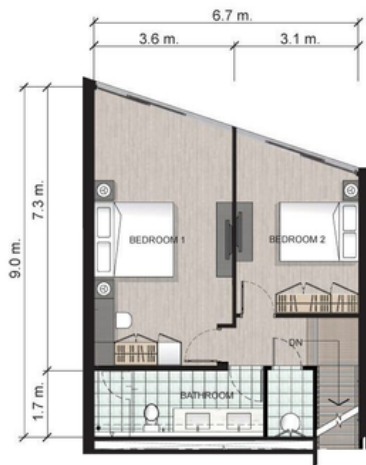
# Exclusive Units



The project is comprised of 3 buildings with a total of 19 units, allowing for supreme privacy for tenants and residents. Our units are in the luxurious, quiet location of Phuket, where you will experience a beautiful sunset with a full sea view. Our units are only 5 to 10 minutes' drive away from Patong, Freedom beach, Merlin beach and Paradise beach. There are many great restaurants, grocery shops and shopping malls such as; Big C, Central and Top Supermarket that are just 5 minutes away. There are luxury 4 – 5 star hotels such as Amari Resort, Rose Wood, Marriott, and others that are also close by for you to enjoy on a nice sunny Sunday evening with family or friends.

# Floor Plan

- Unit 101



UPPER LEVEL - OPTION A

Sea View



UPPER LEVEL - OPTION B



LOWER LEVEL

**UNIT 101**  
 Courtyard Garden Pool / Sea View  
 Building B

3 Bedrooms 2 Full Baths  
 1 Half Baths

Total Area: 184.39 sqm  
 Interior: 148.11 sqm  
 Exterior: 36.28 sqm

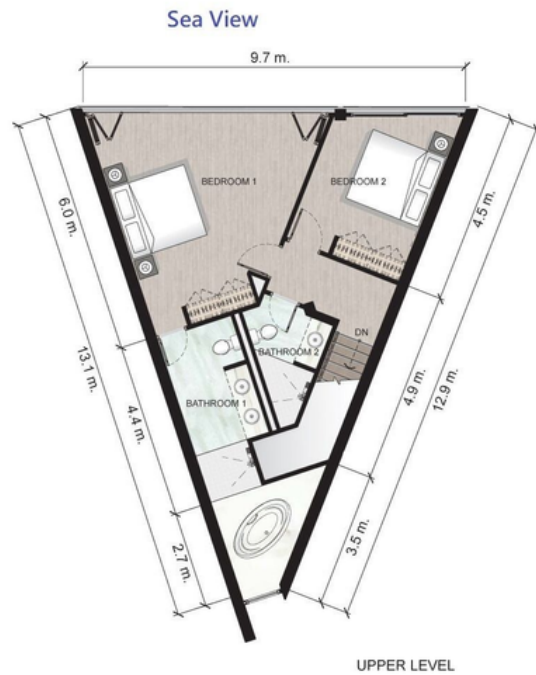


THB 22.79 M

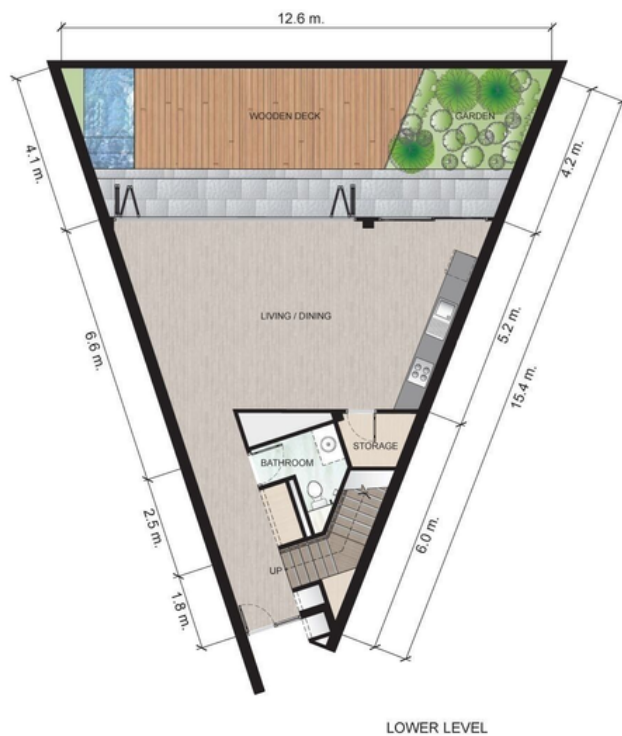
Paul Raff Studio

# Floor Plan

- Unit 102



UPPER LEVEL



LOWER LEVEL

**UNIT 102**  
**Courtyard Garden Pool / Sea View**  
**Building B**

**2 Bedrooms 2 Full Baths**  
**1 Half Bath**

Total Area: 178.84 sqm  
 Interior: 133.62 sqm  
 Exterior: 45.12 sqm

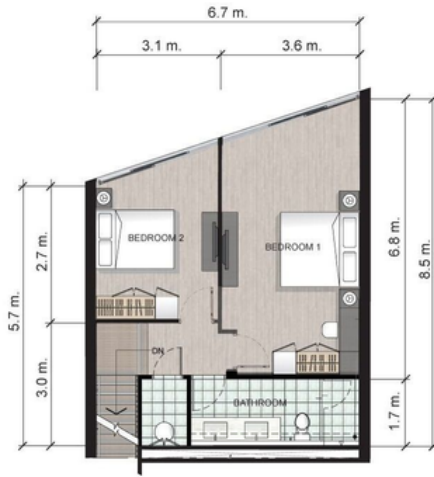


THB 21.68 M  
 Paul Raff Studio

# Floor Plan

- Unit 103

## Sea View



UPPER LEVEL - OPTION A



UPPER LEVEL - OPTION B



LOWER LEVEL

**UNIT 103**  
**Courtyard Garden Pool / Sea View**  
**Building B**

**2 Bedrooms 2 Full Baths**  
**1 Half Bath**

Total Area: 178.96 sqm  
 Interior: 139.95 sqm  
 Exterior: 39.01 sqm



THB 21.45 M  
 Paul Raff Studio

# Floor Plan

- Unit 106



Sea View




**UNIT 106**  
**Courtyard Garden & Pool Access**  
**Building C**

3 Bedrooms 2 Full Baths  
 1 Half Bath

Total Area: 197.77 sqm  
 Interior: 149.27 sqm  
 Exterior: 48.50 sqm

THB 21.98 M  
 Paul Raff Studio



# Floor Plan

- Unit 107



**UNIT 107**  
Courtyard Garden & Pool Access  
Building C

2 Bedrooms 2 Full Baths

Total Area: 151.29 sqm  
Interior: 126.89 sqm  
Exterior: 24.40 sqm

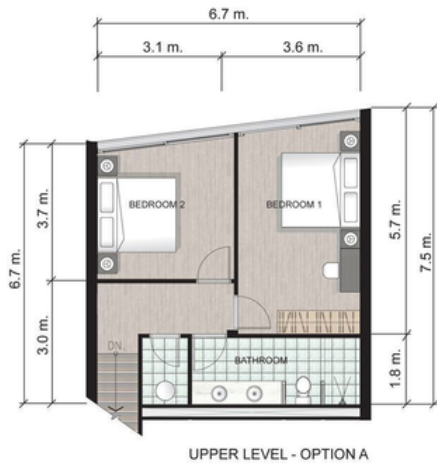


THB 19.20 M

Paul Raff Studio

# Floor Plan

- Unit 108




**UNIT 108** Courtyard Garden Pool Building C

3 Bedrooms 2 Full Baths  
1 Half Bath

Total Area: 173.98 sqm  
Interior: 144.20 sqm  
Exterior: 29.78 sqm

THB 19.2 M

Paul Raff Studio



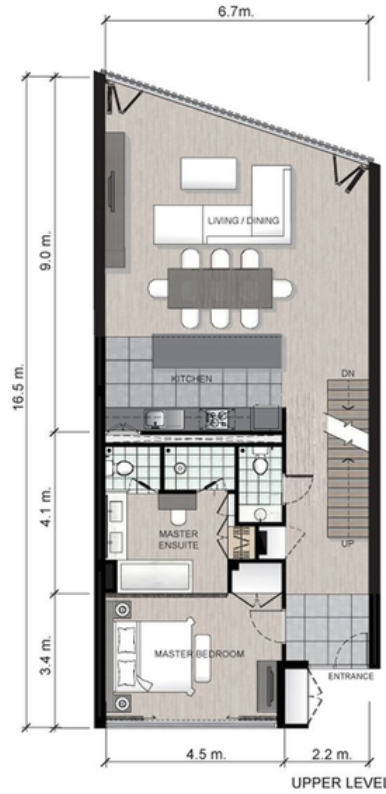
# Floor Plan

- Unit 301

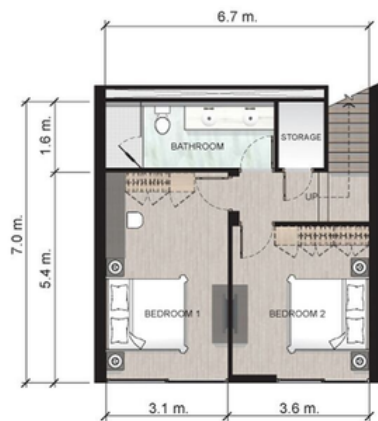
Sea View



ROOF TERRACE



UPPER LEVEL



LOWER LEVEL

**UNIT 301 Penthouse Roof Terrace  
Building B**

3 Bedrooms 2 Full Baths  
1 Half Bath

Total Area: 227.24 sqm  
Interior: 149.96 sqm  
Exterior: 77.28 sqm



THB 31.9 M

Paul Raff Studio

# Floor Plan

- Unit 303

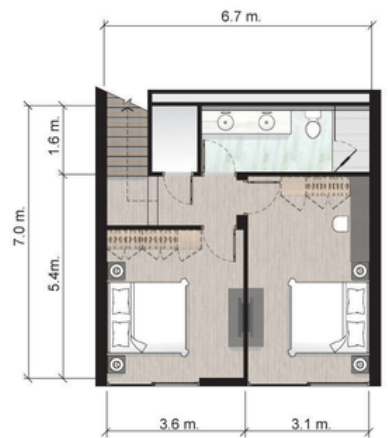
Sea View



ROOF TERRACE



UPPER LEVEL



LOWER LEVEL

**UNIT 303 Penthouse Roof Terrace  
Building B**

3 Bedrooms 2 Full Baths  
1 Half Bath

Total Area: 220.87 sqm  
Interior: 148.42 sqm  
Exterior: 72.45 sqm



THB 31.9 M

Paul Raff Studio

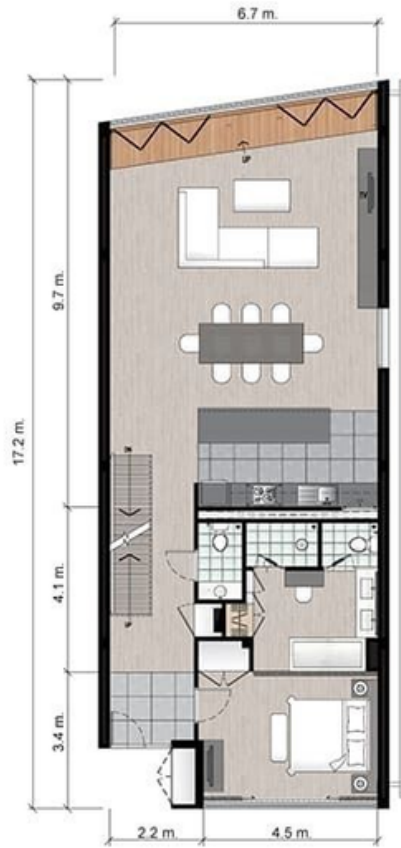
# Floor Plan

- Unit 304

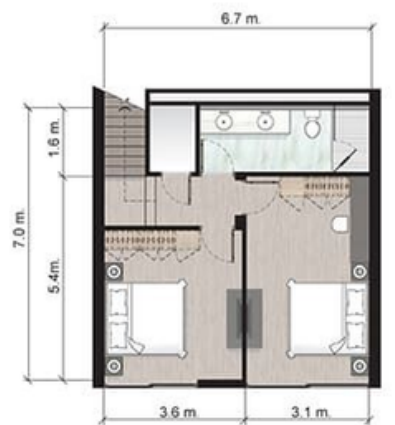
## Sea View



ROOF TERRACE



UPPER LEVEL



LOWER LEVEL

### UNIT 304 Penthouse Roof Terrace Building B

3 Bedrooms 2 Full Baths  
1 Half Bath

Total Area: 240.35 sq.m.  
Interior: 156.35 sq.m.  
Exterior: 84 sq.m.



**THB 37.5 M**

Paul Raff Studio

# Floor Plan

- Unit 307-8

Unit 307-8 Penthouse Roof Terrace  
Building C

5 Bedrooms 4 Full Baths  
1 Half Bath

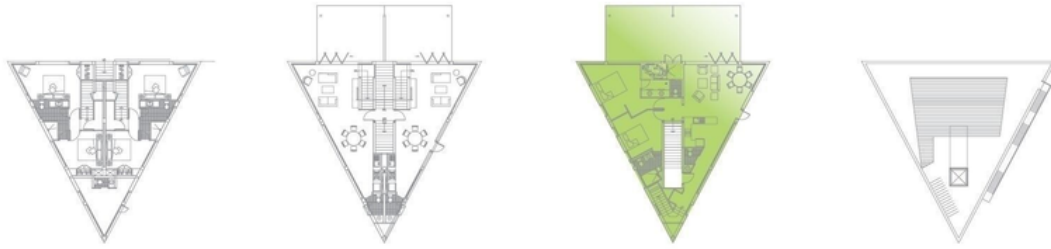
Total Area 453.16 sqm.  
Interior 273.94 sqm  
Exterior 179.22 sqm

THB 59.9 M



# Floor Plan

- Unit 601



Sea View



**UNIT 601 Penthouse Roof Terrace  
& Plunge Pool**  
Building A

2 Bedroom 2 Full Baths  
1 Half Bath , 4th floor.

Total Area: 273.21 sqm  
Interior: 107.99 sqm  
Exterior: 165.22 sqm

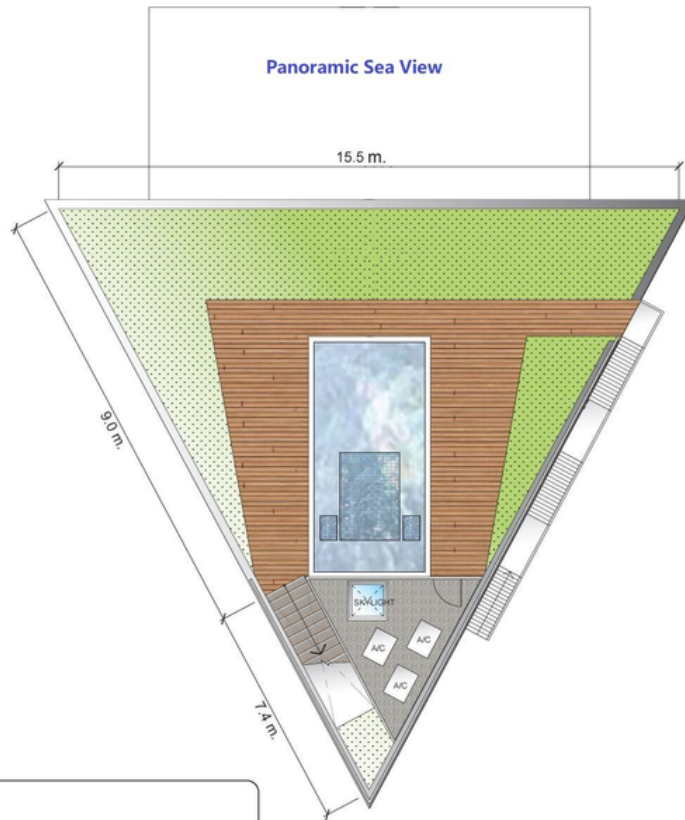
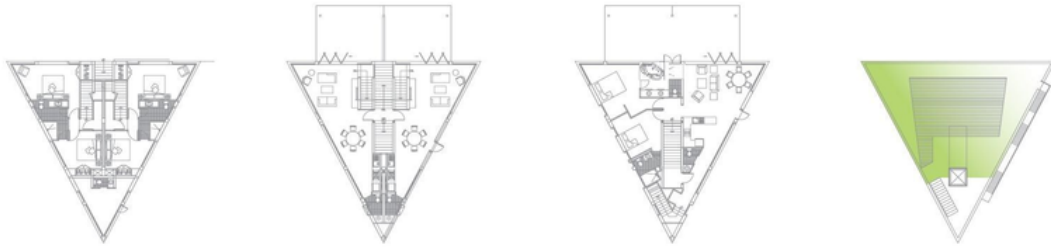
THB 42.5 M

Paul Raff Studio



# Floor Plan

- Unit 601



UNIT 601  
Roof Terrace & Plunge Pool  
Building A

Total Area: 110.20 sqm  
Interior:  
Exterior:



Paul Raff Studio



**+66 65 047 8000**

Email: [contact@bluepointcondo.com](mailto:contact@bluepointcondo.com)

<https://bluepointcondo.com/>



REGISTER FOR BENEFITS